



SLCM'S ANNUAL REPORT

EMERGENCY ASSISTANCE AND
COMPASSIONATE ADVOCACY
IN SOUTH LOUISVILLE



A LETTER FROM THE EXECUTIVE DIRECTOR

DEAR FRIENDS AND NEIGHBORS,

This year hasn't been an especially easy one with the news of the budget cuts and the increasing numbers of city-wide evictions. I would be remiss, however, not to concentrate on the love that we have seen and experienced from donors and clients alike.

There is a sense of community in South Louisville that is powerfully compassionate. We understand crisis happens to all of us, but some of us feel it more acutely. And it's up to us to be there for each other when that happens. You are a part of this wider community, and for that, I hope you feel proud, safe, and loved.

Thanks to your support, we are officially opening a social enterprise, a bookstore in Beechmont, and we are partnering with organizations to implement an eviction prevention program. When we share a sense of fellowship with our neighbors who are living in poverty and fight for economic justice for all, we can create change that so many are desperate to see.

Gratefully,
Clare Rutz Wallace



\$210,856 of Financial Assistance Allocated to Housing, Utilities, and Medication



188 Families Secured Stable Housing and Avoided Homelessness Through Rental Assistance



971 Families Circumvented Disconnection of Water and Electricity Through Utility Assistance



224 Individuals Secured Vital Medication



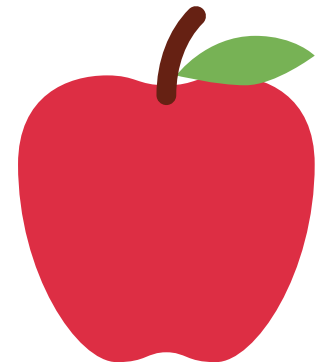
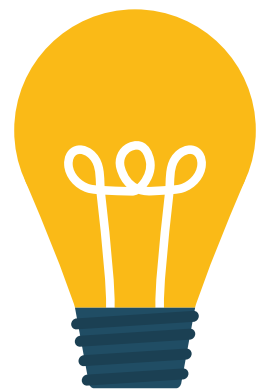
449 Parents Received Necessary Baby Supplies



233,365 Pounds of Food Distributed Through Our Pantry and Produce Days Thanks to Dare to Care



13,924 Additional Meals Delivered to Homebound Seniors



SLCM'S MISSION

To empower neighbors in crisis to move toward stability through emergency assistance (food, medicine, housing, utilities), comprehensive referrals and coaching, and enrichment services for seniors.

BOARD OF DIRECTORS

OFFICERS

MICHAEL CHINIGO, PRESIDENT
HUMANA INC. - NATIONAL SALES MANAGER

THERESA BATLINER, TREASURER
MCM CPAS & ADVISORS LLP - CPA

JEFFREY OESWEIN, VICE-PRESIDENT
LG&E AND KU ENERGY - SENIOR CIVIL ENGINEER

TERRY CONWAY, SECRETARY
LOUISVILLE WATER COMPANY - RETIRED

MEMBERS-AT-LARGE

REV. DR. JAMES DEWEY
LYNNHURST UCC - RETIRED PASTOR

NICOLE GEORGE
LOUISVILLE METRO COUNCIL - METRO COUNCIL MEMBER

KATHRYN MATHENY
CARDINAL PLANNING AND DESIGN - PRESIDENT

TRACY MCDONALD
L&N FEDERAL CREDIT UNION - BRANCH MANAGER

DONNA NGO
PNC BANK - BRANCH MANAGER

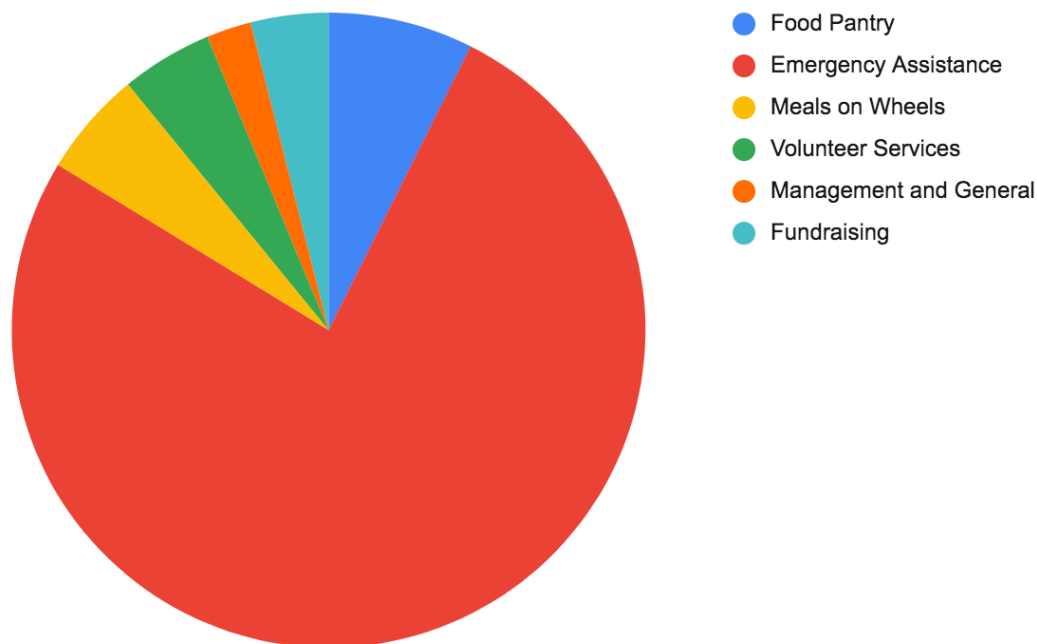
L.D. NUNNELLEY
NUNNELLEY FUNERAL HOME - OWNER

DAVID TUMMONDS
LG&E AND KU ENERGY - GENERAL MANAGER

JOYCE WHALIN
BROWN -FORMAN CORPORATION - RETIRED

FINANCES

	2019		
	Without Donor Restriction	With Donor Restriction	Total
Revenue and Support:			
Contributions and grants	\$ 819,652	\$ 11,520	\$ 831,172
Special events	89,616	-	89,616
Special events expense	(16,965)	-	(16,965)
	892,303	11,520	903,823
Net Assets Released from Restrictions:			
Restrictions satisfied by payments	11,000	(11,000)	-
Total Revenue, Support and Releases	<u>903,303</u>	<u>520</u>	<u>903,823</u>
Expenses:			
Program services	803,995	-	803,995
Management and general	19,600	-	19,600
Fund raising	17,041	-	17,041
Total Expenses	<u>840,636</u>	<u>-</u>	<u>840,636</u>
Change in Net Assets	62,667	520	63,187
Net Assets at Beginning of Year	26,628	23,880	50,508
Net Assets at End of Year	<u>\$ 89,295</u>	<u>\$ 24,400</u>	<u>\$ 113,695</u>



FINANCIAL PARTNERS

Church Partnerships

Hope City Church
 Our Lady of Mt. Carmel
 Grace Community Church
 Lynnhurst UCC
 Holy Trinity
 St. Patrick
 St. Thomas More
 Foster Ave Baptist
 Out Lady of Lourdes
 Beechmont Baptist
 St. Albert the Great
 St. Brigid
 Beechmont Presbyterian
 St. Simon and Jude
 Most Blessed Sacrament
 St. James
 Faith Lutheran Church
 Southside Baptist
 South Louisville Seventh-day Adventist
 St. Edward
 Epiphany
 Valley View
 Iroquois Presbyterian Church
 Guardian Angels
 St. Elizabeth Ann Seaton
 St. Raphael
 St. Teresa of Calcutta
 St. Elizabeth Grace Ministries
 Epworth United Methodist
 St. Gabriel
 St. Bernadette
 St. Agnes
 Westport Church of Christ

Special Grants



Louisville Metro Government
 LG&E and KU Energy
 Louisville Urban Winterhelp
 Louisville Water Company
 Louisville Metro Council
 The Gheens Foundation
 Women 4 Women
 Catholic Health Initiative
 Louisville Metro Senior Nutrition
 Hazel and Walter Bales Foundation
 Sisters of Charity of Nazareth
 Mildred V. Horn Foundation
 Kosair Charities
 Derby City Gaming
 Ainsworth Game Technology

Corporate Sponsors

Taylor Blvd. Save-A-Lot
 Green Team at Exit Realty
 CareSource
 Owen Funeral Home
 PNC Bank
 Cardinal Planning and Design
 L&N Federal Credit Union
 Republic Bank
 Swags Sport Shoes